

# Pavetuf

Jointing Compound

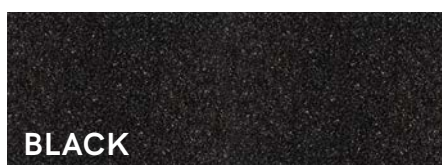


## Jointing Compound

### Guide to the Use & Installation

# Contents

- 03** Introduction
- 04** Installation Guide
- 07** Base Preparation
- 13** Frequently Asked Questions
- 15** Pavetuf Sealers Comparison Chart
- 16** Pavetuf Cleaners Comparison Chart





Quick & Easy to Install



Apply in all weathers



Walk on in 18-24 hours



No waste



Durable



Inhibits weed growth

# Welcome

Pavetuf Jointing Compound is suitable for use with most paving types, that are laid on a semi permeable full mortar bed and subbase, (see Base Preparation for more information and guidance), that does not allow the paving to move under any load.

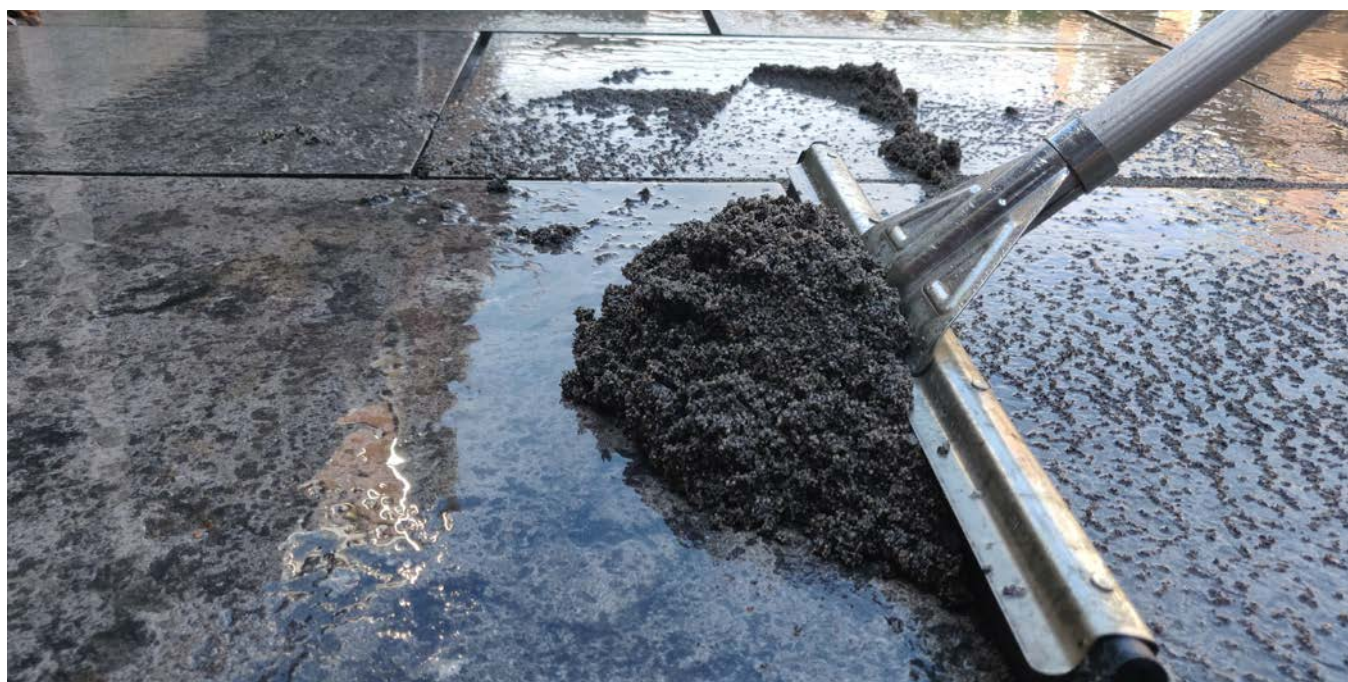
Some paving materials may be prone to staining, so before commencing full installation, always test a small inconspicuous area before proceeding to ensure the finished result is satisfactory.



# Installation Guide

## 8 Easy Steps for Great Joints

- Thoroughly pre-soak the area before application to avoid potential temporary staining.
- Work in small manageable sections to ensure the paving is always kept saturated, this is particularly important in warmer/fast drying conditions.
- Pour Pavetuf Jointing Compound evenly across your section of paving. Top Tip: To further help stop staining, thoroughly soak the Compound in the tub before putting on the paving.
- Using a stiff brush or squeegee, sweeping across the joints at angles, work the Compound into the joints ensuring that they are filled completely, remember, keep the paving saturated throughout.
- Once all joints are filled, lightly spray with water to aid and ensure all the compound is removed from the surface of the paving.
- Use a pointing trowel or striking iron to compact the joint. Any gaps revealed during this process, lightly spray again and top up.
- As the paving begins to dry, using a soft brush, remove any remaining particles from the paving surface to ensure the very best finish. Particles left to dry on the surface may leave a speckled finish.
- Pavetuf Jointing Compound can be applied in almost, all weather conditions. We recommend application only in temperatures between 5°C (41°F) and 25°C (77°F). For application in other extreme weather conditions please refer to recommendations on page 9.



# Coverage

A 15kg tub will cover approx. 15m<sup>2</sup> (161ft<sup>2</sup>) of paving, based on: 600mm x 600mm slabs with 20mm deep/10mm wide joints.

# Top Tips

- The more water added, the easier it is to move the Compound and fill the joints.
- Why not add water into the tub, along with the dry Compound before pouring the Compound onto the paving.
- If you are using Compound from a tub that has been opened previously and soaked in water to preserve it, you should mix the open tub with a new tub before application to avoid colour batching.
- Always sweep across joints at angles.

**Important:** Please note that staining may occur on the paving if it is not kept soaking wet throughout the application process, and if any surplus Jointing Compound is not removed from the surface of the paving.

# Curing

Curing in dry, low humidity conditions will take approximately 24 - 48 hours (and be fully load bearing after 72 hours). Lower temperatures will lengthen the curing time and higher temperatures will generally accelerate the curing time. If installed during sustained wet weather, the curing process will not begin until we have a period of dry weather.

**Important:** See also 'Base Preparation' (page 8) and 'Suitable Weather Conditions' (page 9).

# Storage

Use within 2 years of the date shown on the tub. You can minimise waste as any unused product can be kept in the tub for use on the next job. Add enough water to cover the surface of the remaining product and keep topped up during storage. Store in a cool, dry place away from extreme temperatures. Pour off excess water before re-use and blend with any new product opened to avoid colour/batch variation.

# Health & Safety

Wear protective clothing, eye protection, protective gloves work in well-ventilated conditions. If product enters the eyes, wash thoroughly with water and seek medical advice. May cause skin irritation to sensitive skin. **Before use, please read the safety data sheet available at [www.pavetuf.com](http://www.pavetuf.com)**

It is your responsibility to ensure that you comply with all applicable health and safety legislation and guidelines.

# Recommendations & Precautions

- Amongst the wide selection of paving available some paving materials, (e.g. Sandstone, Concrete), are more susceptible to staining in fast drying conditions than when in comparison to certain Limestones and Vitrified paving. If you consider this when assessing the conditions and follow the recommended instructions on how to use Pavetuf Jointing Compound, staining will not occur.
- Weathering: Pavetuf Jointing Compound, like most external materials, will age with time due to natural weathering and site conditions. A natural discolouration over time can be expected.
- Colour/Batch Variation: Pavetuf Jointing Compound contains natural aggregate materials therefore it is recommended to use product from the same batch and manufacturing date. If batch matching is not possible, we recommend you blend volumes together from different batches to minimise any issues.
- Always ensure joints are filled to the full depth, just slightly below the surface of the paving, to provide good solid joints (20mm minimum). Joints cannot be topped up after the original installation has cured. Poorly filled or bridged joints may result in product failure. Striking off joints creates an even denser joint and, if preferred, a smooth finish.
- This product is for use on foot traffic areas. Please contact our Customer Experience Team for advice on products suitable for driveways.
- Before filling the joint ensure it is clear of any debris that will reduce the width or depth of the joint or prevent the material contacting the walls of the joint. Try and minimise contaminating empty joints with organic matter, this will rot down and potentially affect stability of joint.
- Pavetuf Jointing Compound is not suitable to stabilise loose paving and only suitable for rigid construction. All paving should be laid on a full 6:1 mortar bed (see page 8). This ratio is important as it allows the joint to be free draining whilst curing.
- It is good practice to run a pointing tool over the face of the finished joint before it has cured. This firms up and smooths the face of the product giving an additional resilience.

**Important:** Please note it is the responsibility of the user to ensure the above points are followed. If in doubt it is advised that sample paving sections are carried out to confirm suitability of Pavetuf Jointing Compound for the conditions and paving type. The manufacturer does not accept liability for site issues resulting from failure to observe the above points.

# Base Preparation





# Semi-Permeable Bed

Pavetuf Jointing Compound is an air cured product. This product will only cure once water has drained from the full depth of the joint and away through the mortar bed and sub-base. Any water that is not draining away and is sitting in the joint or the mortar bed will delay or even prevent curing of the compound.

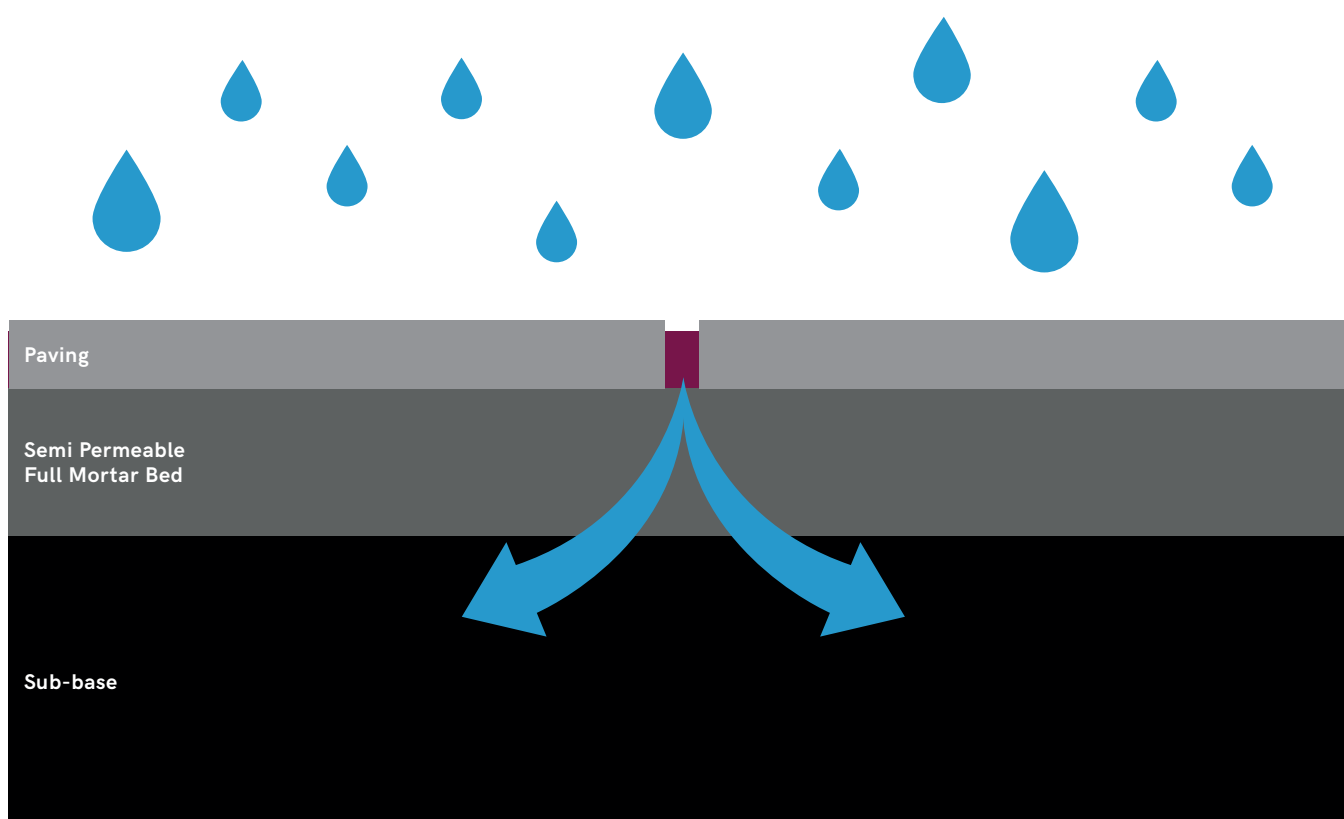
It is important to understand the design of the base, the paving types being used and the conditions in which you will be working before installation to ensure it is the correct Pavetuf jointing solution to use.

As copious amounts of water are required during placement of the product, the compound must be laid on a semi-permeable, free draining mortar bed using clean sharp sand and Portland cement (e.g. approx 6:1) that will allow water to drain from the jointing compound and mortar bed through into the sub-base during that initial curing period. The sub-base must not be fully bound or a concrete slab, that will not allow water to drain. Generally, compacted MOT type 1 or similar is fine.

Be assured, if the paved area is correctly laid with an appropriate fall, once the jointing compound has fully cured and hardened it is unaffected by further rainwater, allowing water to run off the paved plane, as would be expected with any rigid construction jointing solution.

Top Tip - If a stronger bed is required for any reason, you could consider using a sufficient number of packers or spacers per joint, inserted through the bed into the sub-base, that when removed next day, will allow drainage through the laying course.

**Important:** Follow our Natural Paving Planning & Installing Guide for full recommendations on installation. Visit [www.naturalpaving.co.uk](http://www.naturalpaving.co.uk).



# Suitable Weather Conditions

Pavetuf Jointing Compound can be applied in wet and dry weather conditions, however, if extreme weather is forecast like heavy prolonged rain, snow, freezing conditions and extremely high temperatures, see information below. One of the benefits of Pavetuf Jointing Compound over traditional jointing methods is that it can be applied in wet weather. As advised in the curing section (page 5), wet conditions will prolong curing time.

## Heavy Rain

If heavy rain is forecast within the required curing period we recommend against installing the product until improved conditions prevail. Heavy rain may disturb an uncured joint surface and may flood the joint cavity. Depending on falls and drainage, it may result with areas of staining where water contaminated with particles and resin is allowed to stand on paving if the joints are not sufficiently cured.

## Freezing Conditions & Snow

Pavetuf Jointing Compound is recommended for use in temperatures of 5°C (41 °F) and rising. When fully cured the Pavetuf Jointing Compound is fully durable against our winters. During installation freezing conditions are a safety risk for pedestrians due to the copious amounts of water required. Furthermore a saturated, uncured joint and the semi-permeable bed below, subjected to sub-zero conditions could be irreparably damaged due to freeze/thaw expansion. We strongly recommend against installing Pavetuf Jointing Compound if there is a potential for standing snow on the paving area before the joint has fully cured. This may result in the joint never fully curing.

## Extreme Heat

Pavetuf Jointing Compound can be applied when the air and surface temperature is 5°C (41°F) to 25°C (77°F). There is an increased risk of resin staining in higher temperatures or bright sunshine if the installer is not conscientiously keeping the paving constantly saturated. All paving surfaces can hold significant surface temperatures in summer conditions that make the care required much different to other seasons. Water levels and care required will go up exponentially from 5°C to 15°C and more urgently, to 25°C. We recommend applying in small manageable sections, particularly in warm conditions. As some paving types are more porous than others please ensure you give more consideration to less porous paving in extreme heat. Please note, paving surfaces in direct sunlight may reach temperatures 2 or 3 times that of the air temperature thus allowing surfaces to dry to a state where staining can occur rapidly. Always remember to keep the paving saturated throughout application.

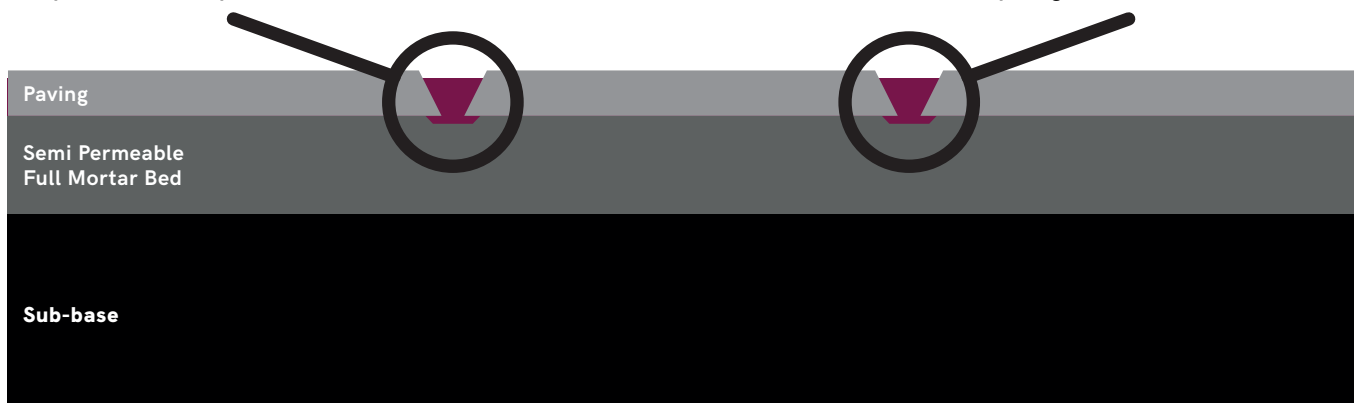
# V Joint Chamfered Paving

Some concrete paving is made in moulds and has angled edges creating a 'V' shaped joint between two paving slabs, which makes it wider at the top than at the bottom. This gap shape can be challenging to work with, we recommend you carefully follow the instructions below to ensure stability of the joint.

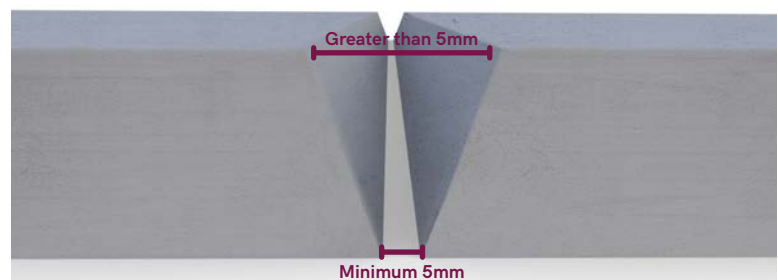
- Never overfill the Joint. This is particularly important if the paving has a "rounded" top edge. The Pavetuf Jointing Compound should be kept below the start of the "rounding".
- Lock in the Joint. The irregular "V" shaped joint means that any type of joint filling option will have difficulty staying in place. To assist in creating a stable joint when laying the paving, draw the tip of your trowel along the bottom edge of each slab so that a small gap forms along and under the paving edge, this will allow the Pavetuf Jointing Compound to flow into the gap and when cured will be locked into place. See diagram below.

Create a small gap under the bottom edge of each slab to lock the Pavetuf Jointing Compound under the paver.

Fill the Pavetuf Jointing Compound just below the top surface of the paving.



- Maintain the width of the joint, minimum 5mm, throughout the depth of the paving. Never butt this type of 'V' shape paving up together.



- "Point" or "strike" the joint; do not leave it textured. This ensures the Pavetuf Jointing Compound is pushed into the small gap created along the underside of the paving and it sits below the top rounded edge of the paving which will help it adhere to the base and sides of the paving material.

# Repointing Existing Paved Areas

Pavetuf Jointing Compound can be used to replace existing old and flaking jointing material. You must fully clean out the old jointing material completely to create the correct joint size with a minimum 5mm width and full flag depth (minimum 20mm). Do not use Pavetuf Jointing Compound if the correct and fully clean joint size cannot be obtained. Before proceeding you must ensure the base on which the old paving is laid is permeable enough to allow water to free drain through into the subbase below. Pavetuf Jointing Compound will only cure hard when all traces of moisture have gone from the full depth of the joint. Any moisture held in the joint from a poor draining base will delay curing of the product or even prevent it from curing at all. If there is uncertainty about the permeability or the ability to get the required minimum joint depth or width do not use Pavetuf Jointing Compound and look to use an alternative Pavetuf Jointing option suitable for the application. If your existing paving is concrete and has chamfered edges ('V' shaped joints) refer to 'V' Joint Chamfered Paving section for additional guidance.

## Suitable Paving Types

Pavetuf Jointing Compound can be used externally with all Talasey paving products with a minimum of 20mm thickness and most paving types supplied by other manufacturers so long as all paving is kept completely saturated throughout the whole application process. If the paving is concrete and has chamfered edges ('V' shaped joints) refer to 'V' Joint Chamfered Paving section for additional guidance. For ranges of 18mm, for example, Vitripiazza Anno, you should also follow the same method as 'V' shaped joints. We do not recommend Pavetuf Jointing Compound for thicknesses below 18mm. The product is not appropriate for internal use.

We have two alternative jointing solutions that may also be appropriate for your paving product or type of use. These are Pavetuf Jointing Grout and Jointing Mortar.

## Joint Width & Depth

All paving joints should be a minimum width of 5mm and up to a maximum width of 20mm. Joint depths should be the full thickness of the paving. See above for more detail on minimum flag thicknesses. Deeper joints will extend curing times. It should always be ensured that Pavetuf Jointing Compound penetrates the full depth and width of the joint, without voids, to provide maximum stability. Voids left in the body of the jointing will cause permanent weakness in the joint. Prior to applying Pavetuf Jointing Compound ensure all loose material and organic matter is raked free from joints to ensure clean and full depth.

# Cleaning

As with all paving products, occasional cleaning and maintenance may be required or desired. On new installations, cleaning of paved areas should not be attempted until the joints are fully cured. To remove dirt and debris build up on top of the joints, often a hose and brush is sufficient or pressure washer on a low-pressure setting/wide fan. For more stubborn staining agents and dirt, you could consider using one of the Pavetuf Cleaner range products. Pavetuf Deep Cleaner or General Cleaner are recommended dependant on the amount of soiling.

Pavetuf Green-Off is recommend for the easy removal of areas that have a moss, Algae and other organic growth. Green-Off will also slow the regrowth. Visit [www.pavetuf.com](http://www.pavetuf.com) for further information.



# Frequently Asked Questions

## **What colours does Pavetuf Jointing Compound come in?**

Pavetuf Jointing Compound comes in three great colours, Grey, Buff and Black to compliment any paving application. See also 'Colour/Batch Variation' advice on page 6.

## **What should I do with any excess product after installation?**

Unlike some other jointing options on the market, there is minimal waste with Pavetuf Jointing Compound as we have made it so you can keep any unused open product. Place any unused Pavetuf Jointing Compound back into the tub and cover it with at least 50mm (2 inches) of water. As Pavetuf Jointing Compound is an air cured product whilst ever it is covered with water keeping the oxygen out, it will not go hard. It should remain suitable to use for up to several months providing it remains covered with water. See also colour/batch variation on page 6.

## **Is Pavetuf Jointing Compound suitable for paving sensitive to marking?**

The majority of paving types will not stain if Pavetuf Jointing Compound is used correctly by following the installation instructions on the Pavetuf Jointing Compound Tub, by watching our how-to video or downloading the installation instructions on [www.pavetuf.com](http://www.pavetuf.com). If you are unsure and before commencing full installation, always test a small inconspicuous area before proceeding to ensure the finished result is satisfactory. You may also pre-seal your paving with one of the Pavetuf Sealers on the whole slab before it is installed or on the surface after it has been installed but before jointing. Choose from one of our water based Pavetuf Sealers in our Pavetuf Landscape Solutions range. We are unable to comment on whether other manufacturers products are suitable for use in conjunction with Pavetuf Jointing Compound.

## **What if I didn't fill my joint properly can I top it up after?**

You can only top up your Pavetuf Jointing Compound during installation. Once curing has started to take place you will not be able to top it up as it will not adhere to the already curing joint. By following the Installation Instructions you will ensure that during installation you fill any low joints or voids that appear. You must always spray the area with water after the first pass installation as the water will pull the jointing compound into any voids in the joint allowing you to them top up.

## **Can I use Pavetuf Jointing Compound with a driveway project?**

Pavetuf Jointing Compound is only suitable for domestic foot traffic. However, our Pavetuf Jointing Mortar is perfectly suited to most driveway applications.

### **Can I use a power washer to clean the paving and joints?**

Yes, you can but we have made cleaning easy with a full range of maintenance products in our Pavetuf Cleaners & Maintenance to negate the need for the use of high-pressure power washers. Treating all kinds of different stains and dirt build up use the chart (see page 16) to identify the cleaner to suit your requirements. If you do choose to use a pressure washer do not clean your paving and newly installed Pavetuf Jointing Compound until it is fully cured, at least 4 weeks after installation. When you clean the patio hold the power washer on a low pressure, at an angle of about 45 degrees and using a fan spray from no closer than 300mm from the paving joint. Alternatively, often a hose and brush will suffice to remove built up dirt and debris.

### **Air cured, what does this mean?**

The mixture that makes up the Pavetuf Jointing Compound simply cures in contact with the oxygen in the air. During packaging the product is vacuum packed and sealed so it cannot cure. Once the bag is open it starts the curing process. Water stops the product curing during installation which allows time to work with the Pavetuf Jointing Compound for as long as you need and it will only then start to cure once the water has freely drained away and the moisture in the joints has gone. Therefore, it is essential to lay your paving on a semi-permeable bed so the water can drain freely away. See Semi- Permeable Base section on page 8 for guidance on this. Any unused product can be kept from this air curing process by putting it back in the tub and covering it with water.

### **It was raining when I installed the Jointing Compound and we are still getting showers; will it affect the drying time or final appearance?**

It will take longer to cure, for full details refer to 'Suitable Weather' on page 9.

### **Why do you need to soak the paving before using the product?**

It is critical to stop staining of the paving surface which must be kept saturated throughout placement. Water creates a barrier on the paving against the binding agent until it is safely contained in the joint and curing allowed to commence. Water can also help the user to sweep and flow the product across the paving surface easily.

### **Where can I buy Pavetuf Jointing Compound?**

To find your nearest Pavetuf Stockist contact our Customer Experience Team on [customerexperience@talasey.co.uk](mailto:customerexperience@talasey.co.uk) or visit [www.pavetuf.com](http://www.pavetuf.com) and use our friendly live chat service to speak with an agent.

**[www.pavetuf.com](http://www.pavetuf.com)**

For further information or technical advice call  
**0330 333 8030**

Distributed by Talasey Ltd  
[www.talasey.co.uk](http://www.talasey.co.uk)

# Pavetuf Sealers & Cleaners



Features										Use on these materials						Look	
Environmentally friendly	Colour Enhancing	Waterproofing	Breathable	Superior stain resistance	Stain resistance	Superior scrub rate	UV stable	Use straight after installation	Black slates, granites & limestones	State & limestone	All other natural porous products & stone	Masonry	Brickwork	Concrete paving	Tarmac	Invisible finish	Satin finish
✓	✓	✓	✓	✓	✓	✓	✓	✓	✓	✓	✓	✓	✓	✓	✓	✓	
✓	✓	✓	✓	✓	✓	✓	✓	✓	✓	✓	✓	✓	✓	✓	✓		✓
✓	✓	✓	✓	✓	✓	✓	✓	✓	✓	✓	✓	✓	✓	✓	✓	✓	
✓	✓	✓	✓	✓	✓	✓	✓	✓	✓	✓	✓	✓	✓	✓	✓		✓
✓	✓	✓	✓	✓	✓	✓	✓	✓	✓						✓		

**Invisible:** Easy to apply, invisible sealer for long lasting protection. Available in a 1ltr and 5ltr tub.

**Satin:** Easy to apply sealer, for long lasting protection with a satin finish. Available in a 1ltr and 5ltr tub.

**Invisible Ultra:** Professional deep penetrating invisible sealer giving the highest level of protection and superior stain resistance. Available in a 1ltr and 2.5ltr tub.

**Satin Ultra:** Professional deep penetrating satin sealer giving the highest level of protection and long lasting stain resistance. Available in a 1ltr and 2.5ltr tub.

**Back to Black:** A colour reviving sealer to restore black stones and granites. Available in a 1ltr and 5ltr tub.



The Ultra product options provide our highest level of sealant protection, with superior stain repellent properties that allow for a longer period of time before any spillages will soak into and stain the paving. This gives Homeowners more time before they need to clean any spillages.



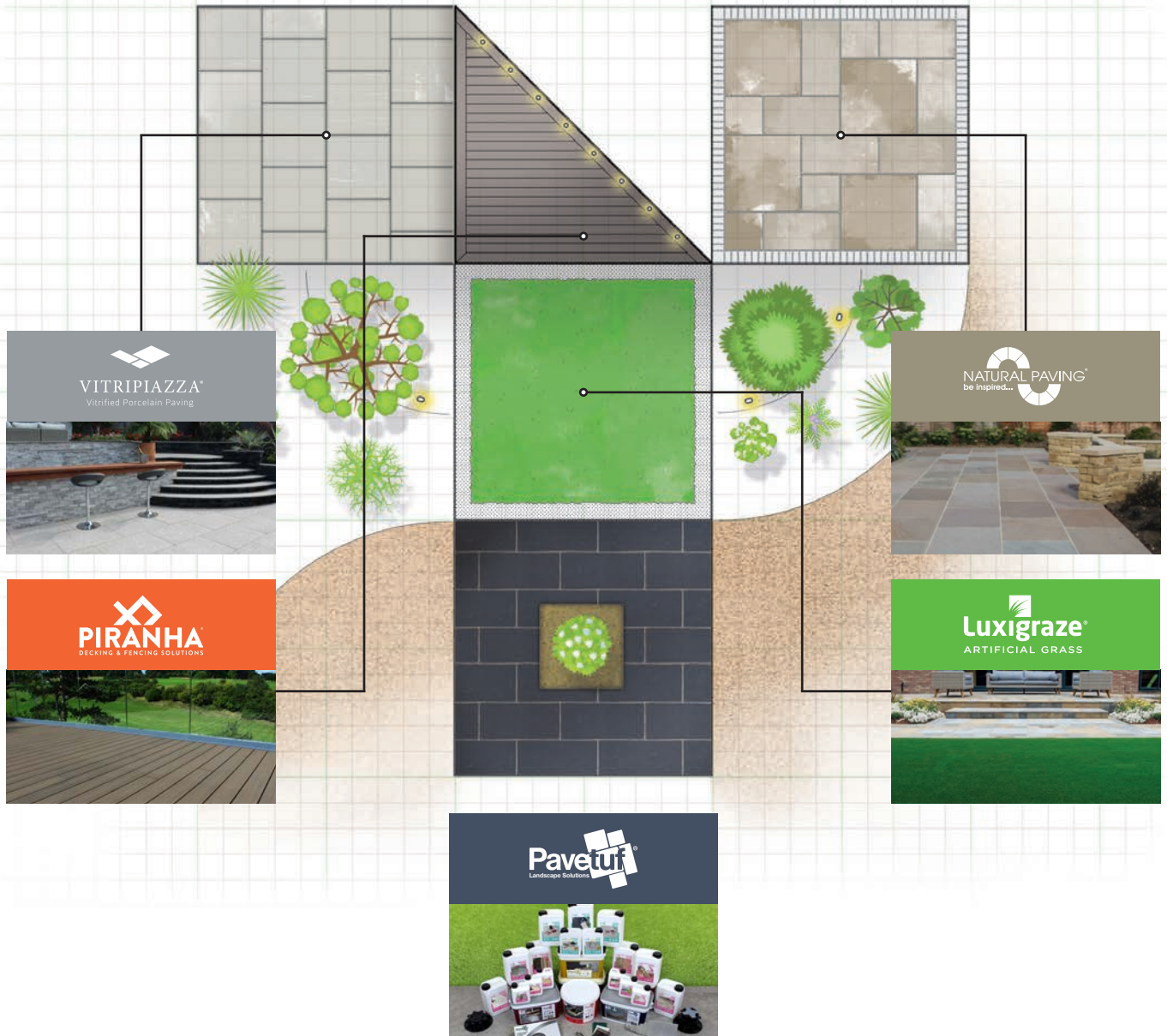


	Stains that each cleaner removes												Size options		
	Algae, moss, mildew, fungi	Black & white spot lichens	Heavy soiling	Light soiling	Grease & oil*	Leaf & plant staining	Bird droppings	Efflorescence/salts	Rust/iron ore	Solvent sealers paints/varnish	Mud	Atmospheric pollution	BBQ grease, oily food stains*	1 litre	5 litre
<b>Deep Cleaner*</b> : A deep penetrating cleaner for the easy removal of heavy soiling from all hard landscaping areas.			✓	✓	✓		✓				✓	✓	✓	✓	✓
<b>Resin Bound Cleaner</b> : A powerful heavy duty cleaner for resin bound aggregate surfaces.			✓	✓	✓		✓				✓	✓	✓	✓	✓
<b>Green Off Cleaner</b> : For the removal of algae, moss, leaf staining and organic growths from all hard landscaping areas.	✓		✓	✓		✓	✓				✓	✓		✓	✓
<b>Wood Deck Cleaner</b> : Effective for the removal of organic growths and staining from wooden decking.	✓		✓	✓		✓	✓				✓	✓		✓	✓
<b>UPVC &amp; Fascia Cleaner</b> : An effective UPVC cleaner for the removal of organic growths and staining.	✓		✓	✓		✓	✓				✓	✓		✓	✓
<b>Wall &amp; Render Cleaner</b> : A non-corrosive cleaner for the removal of organic growths and staining for brick and rendered walls.	✓		✓	✓		✓	✓				✓	✓		✓	✓
<b>Composite Cleaner</b> : A concentrated acid free cleaner for use on composite decking, fencing and doors.			✓	✓			✓				✓	✓		✓	✓
<b>General Cleaner*</b> : A general cleaner for regular maintenance on all hard landscaping areas.				✓			✓				✓	✓		✓	✓
<b>Rust Remover</b> : An effective, non-corrosive rust stain remover for hard landscaping products.									✓					✓	
<b>Salt Eraser</b> : For the removal of efflorescence/salt from the surfaces of paths, drives and patios.							✓							✓	✓
<b>Porcelain Cleaner*</b> : A concentrated porcelain and ceramic cleaner for internal and external use.				✓			✓				✓	✓		✓	✓
<b>Sealer Remover</b> : Easy to use sealer remover for use on solvent and polymer based sealers, paints and varnishes.									✓					✓	✓

\*Can be used internally as well as externally

# TOTALLY TALASEY

TALASEY ARE PROUD TO BRING YOU THEIR EXTENSIVE PORTFOLIO OF THE FINEST LANDSCAPING PRODUCTS AND SOLUTIONS



Legal Notice - The information in this Document or on Talasey Ltd's Website referred to herein (the "Materials") is for guidance purposes and intended to assist you in your purchase and enjoyment of the product. Talasey Ltd will have no responsibility or liability, howsoever arising, for reliance on the information provided in the Materials. Talasey Ltd's sole liability in respect of any products shall be as outlined in the terms and conditions of purchase or in any express guarantee relating to the product purchased. Any product guarantee referenced in the Materials is subject to terms and conditions. Whilst we work closely with our partners, any arrangement you make or advice you take from them will be subject to your contract with them and Talasey Ltd has no liability in respect of any act or omission of any third party. Every effort has been taken to ensure that the information contained in the Materials is accurate, specifications and tolerances will be as contained in your order for the products, and may differ from those stated in the Materials, particularly with respect to natural materials where colours may differ from those illustrated. Guidance provided by Talasey Ltd is generic and advice should be sought in respect of local environmental and building regulations as applicable.



PT3CTG0322V4

See website for terms & conditions  
info@talasey.co.uk  
0330 333 8030  
www.talasey.co.uk



  
**TALASEY**  
GROUP